

Appendix D: Color Figures

for

On using Integral Projection Models to generate demographically driven predictions of species distributions: development and validation using sparse data

Cory Merow, Andrew Latimer, Adam Wilson, Tony Rebelo, John Silander

March 31, 2014

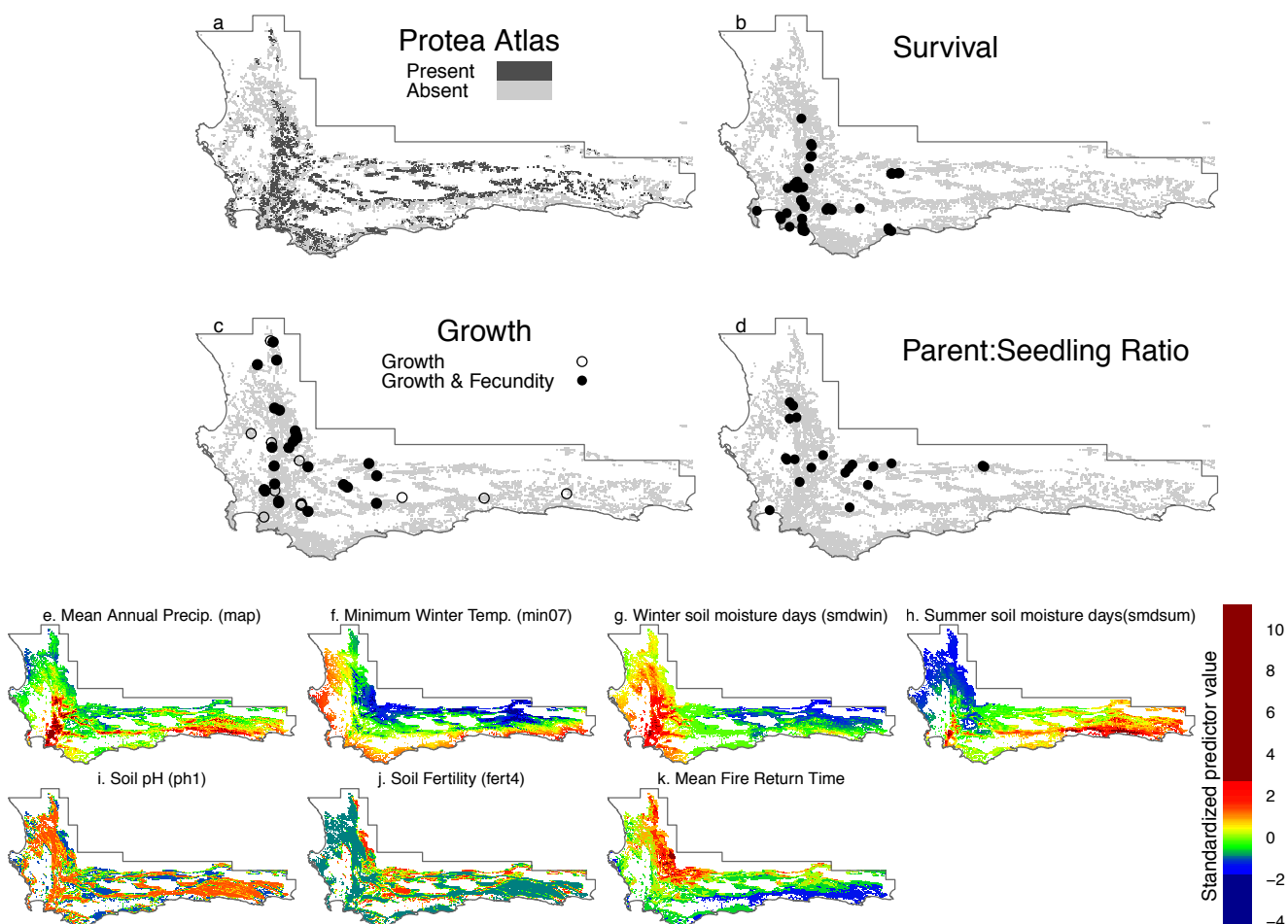


Figure 1:

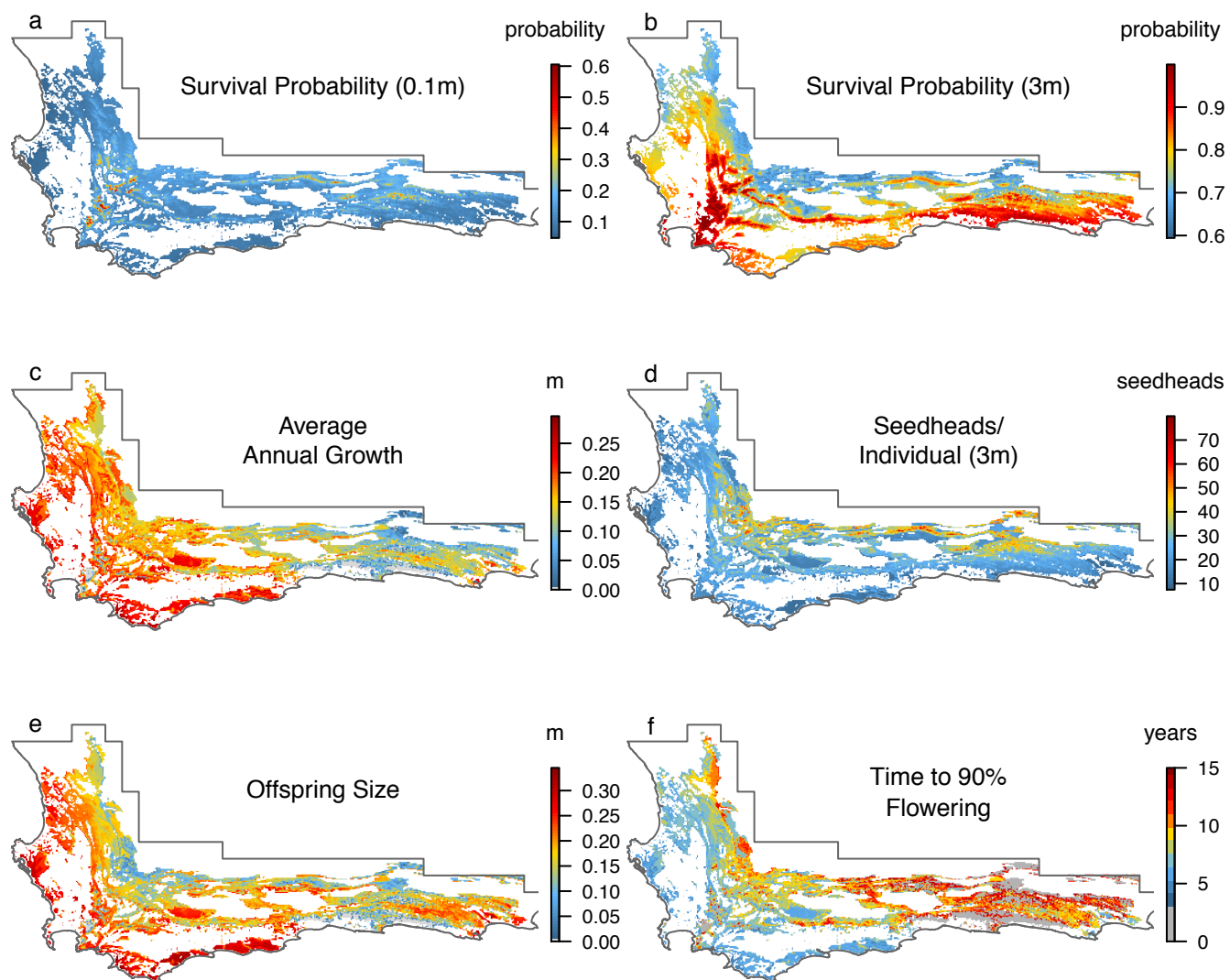


Figure 2:

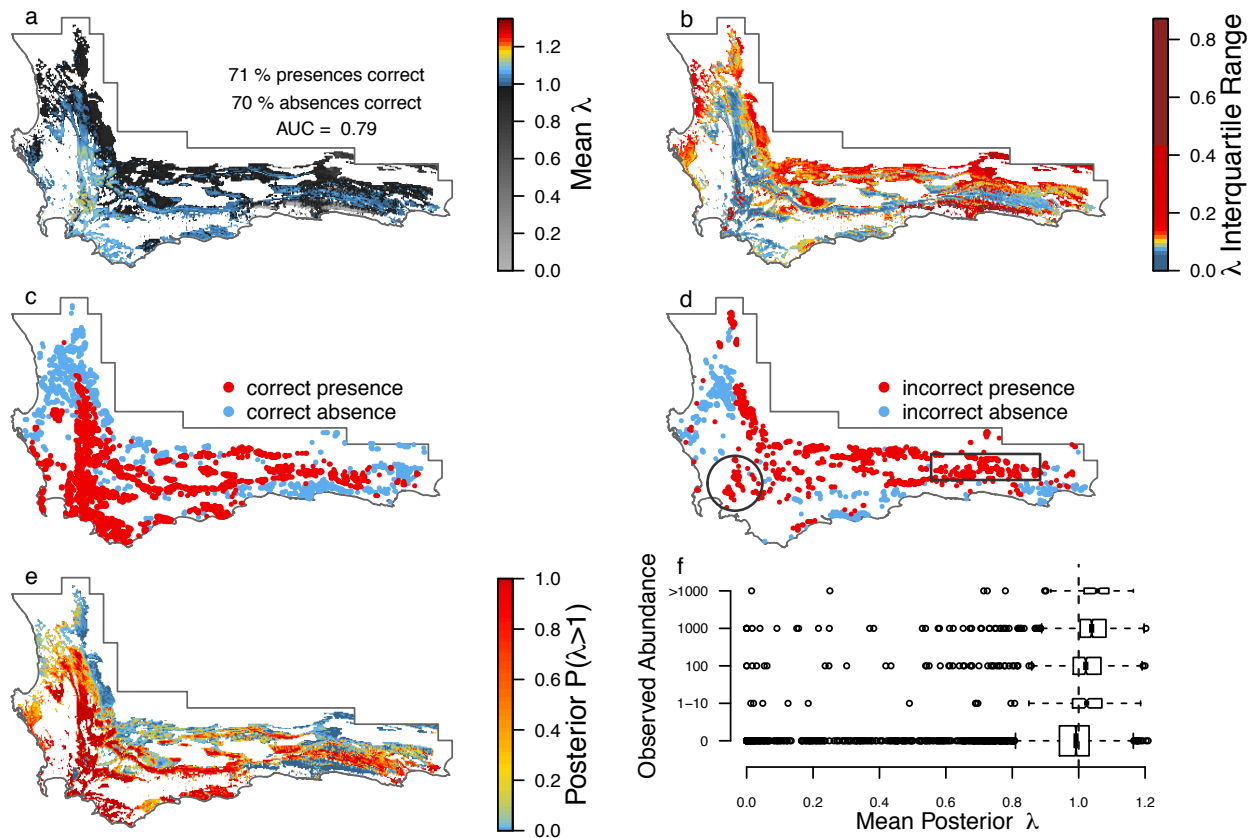


Figure 3:

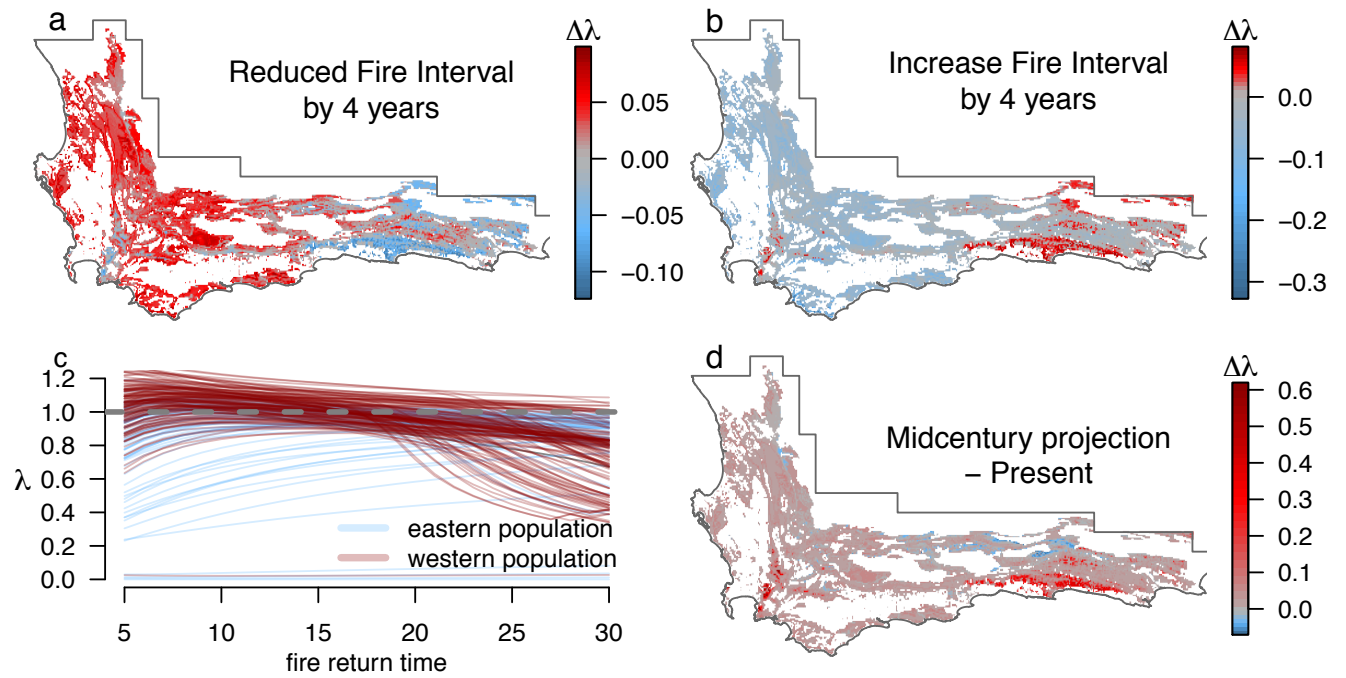


Figure 4:

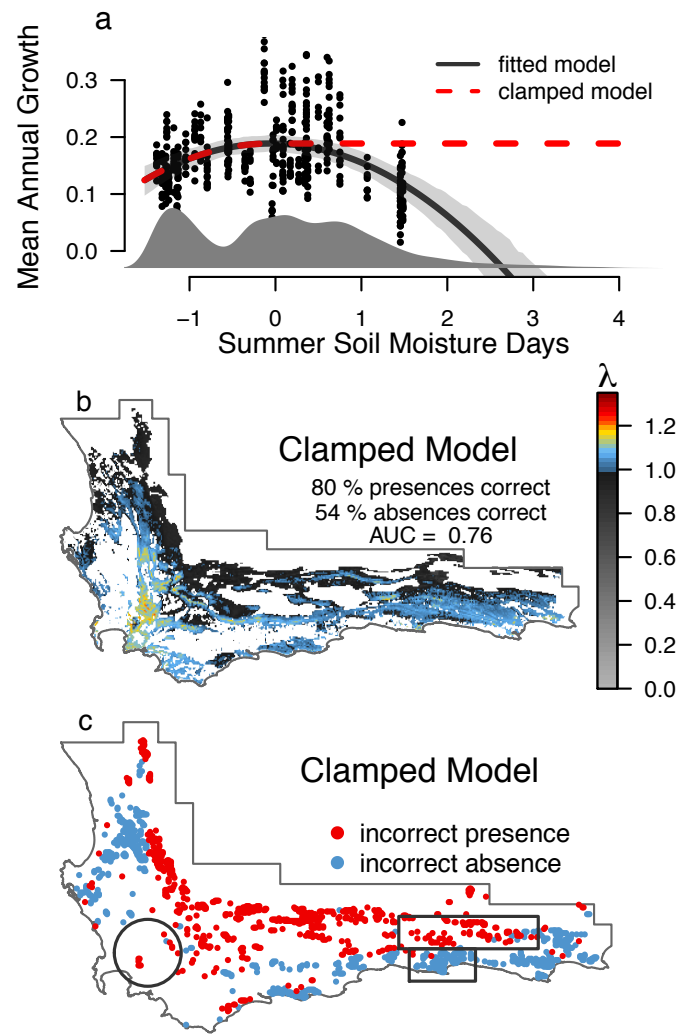


Figure 5:

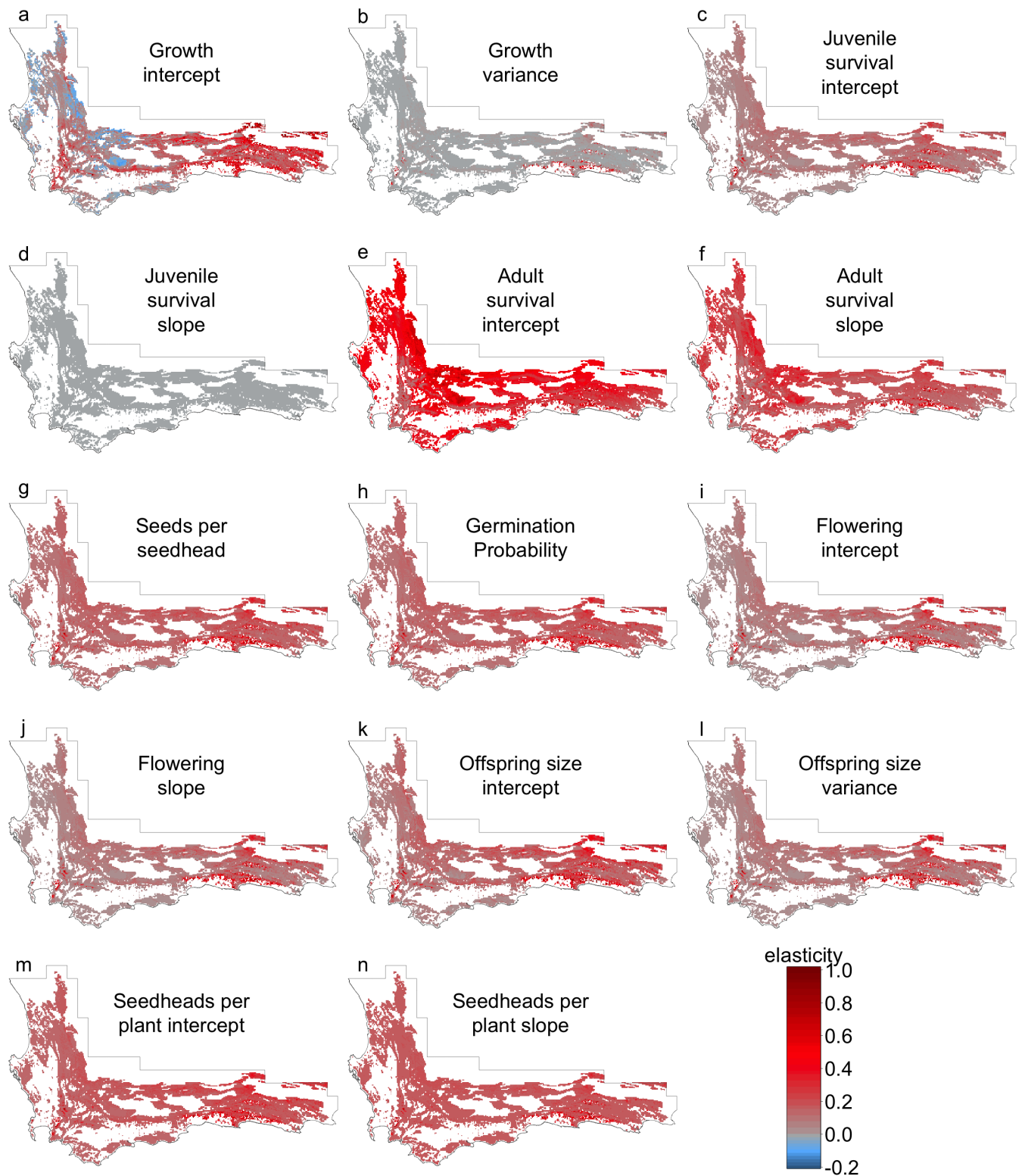


Figure 6:

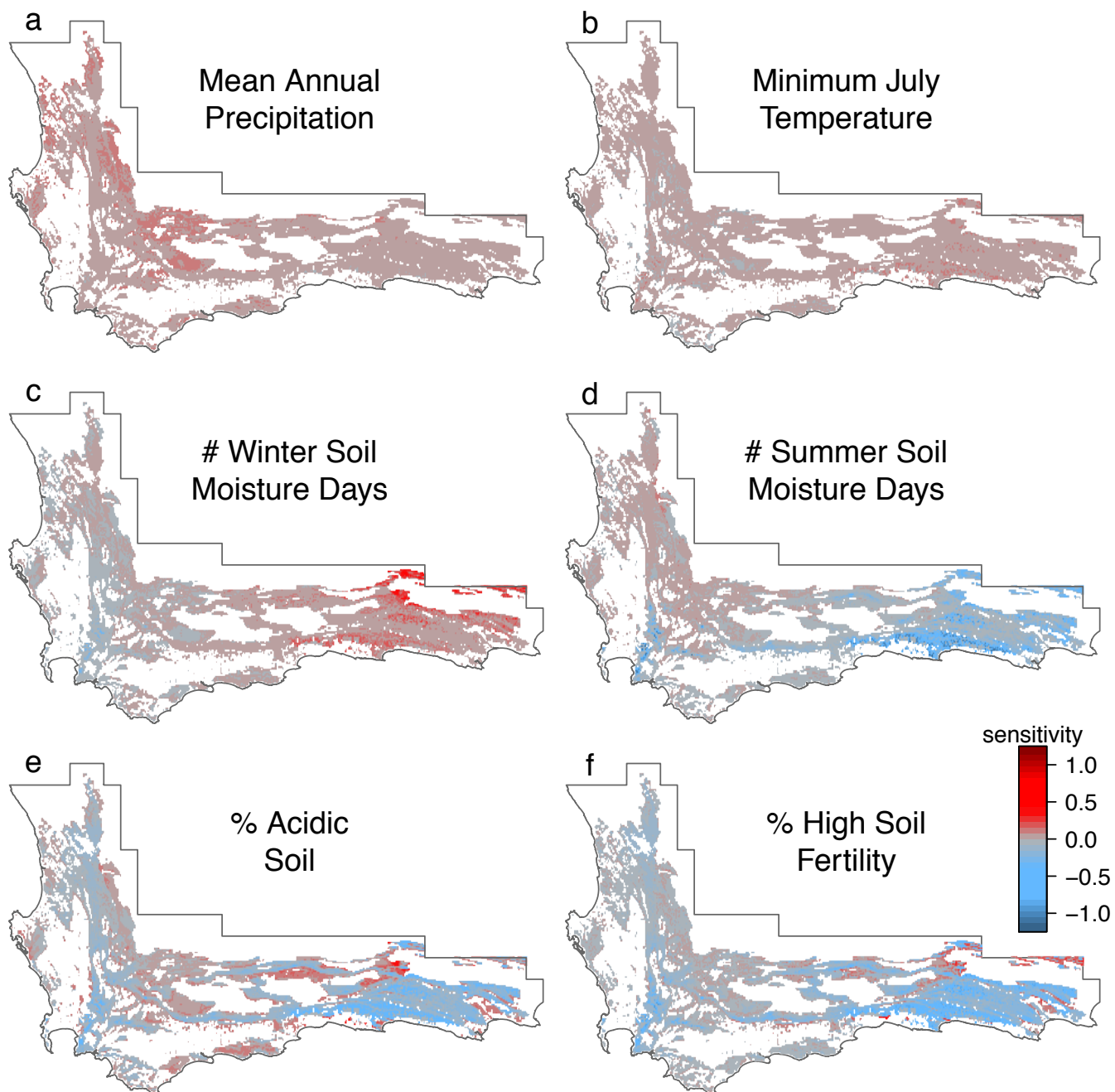


Figure 7: